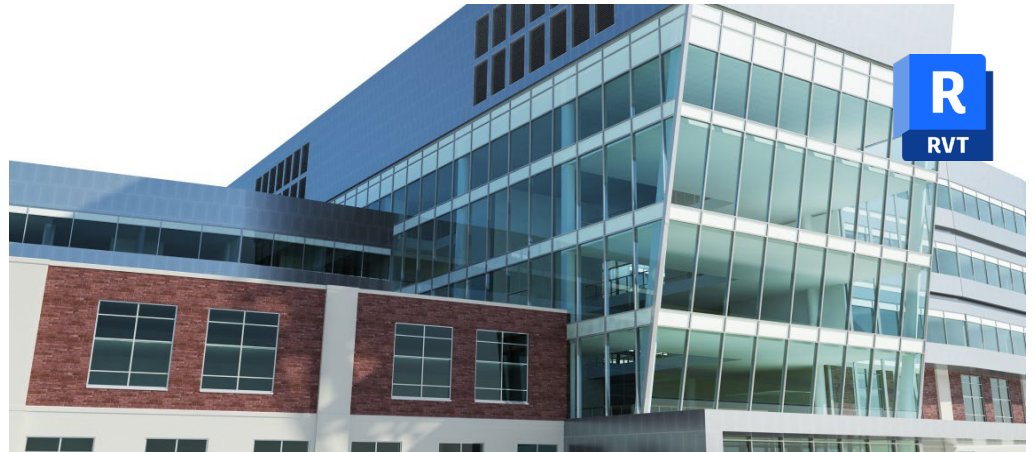


Advanced Revit *for Mechanical, Electrical, Plumbing (MEP)*

Training course outline

Advanced-level course for mechanical, electrical and plumbing (MEP) engineers who want to take their use of Revit to the next level.



Course summary

Teaches how to use Revit's advanced features and tools used by MEP engineers as part of the design, analysis and documentation of building systems projects. The topics covered on this course include:

- Setting model for services.
- Environmental analysis.
- Creating HVAC and ductwork systems.
- Creating pipework.
- Creating electrical systems.

Duration

Two days.

Who should attend?

Mechanical, electrical and plumbing engineers who want to take their use of Revit to the next level, learning to use Revit's advanced features and becoming more productive.

Prerequisites

You should have a good working knowledge of Revit for MEP design, i.e. be familiar with the topics taught in our *Revit MEP Essentials* course (see armada.co.uk/revitmepeess/syllabus).

In-class or live online

You can attend in-person at our centres, or participate live online from your place of work or home.

To read about our approach to online training, see armada.co.uk/liveonline.

General information

Armada is a long-standing Autodesk authorised Training Centre (ATC), and our courses are accredited by Autodesk.

Courses are hosted by Autodesk Certified Instructors (ACIs) with vast experience of using the application professionally.

Whilst attending training at our centres, you'll have the use of a computer running licensed software to practice the techniques taught.

Refreshments and lunch are provided.

Course fees can be paid by card or bank transfer. We accept purchase orders from UK-registered companies and public sector organisations.

Course materials and certificate

You'll receive:

- A comprehensive training guide and practice files.
- An e-certificate confirming successful completion of an accredited *Advanced Revit MEP* course.

Method of delivery

Training is designed for the busy professional, being short and intensive and combining lecture and demonstration. Practical exercises carried out under guidance help you learn the techniques taught.

You have ample opportunity to discuss specific requirements with the trainer.

After course support

Following training, you're entitled to 30 days' email support from your trainer.

Further information

See armada.co.uk/course/advrevitmepe.

Course syllabus

Topics	Sub-topics
Getting started	General introduction Defining discipline settings View control
Working with architects and engineers	Linking Revit models Monitoring changes in linked files Checking and fixing interference conditions
Environmental analysis	Analytical spaces Representing volumes Creating zones Calculating heating and cooling loads
HVAC systems	Creating HVAC systems Generating HVAC system Layouts Creating and modifying ductwork
Piping systems	Creating system piping
Electrical systems	Inserting electrical items Creating electrical circuits Creating wiring
Annotations and schedules	Working with text and tags Creating legends Working with schedules